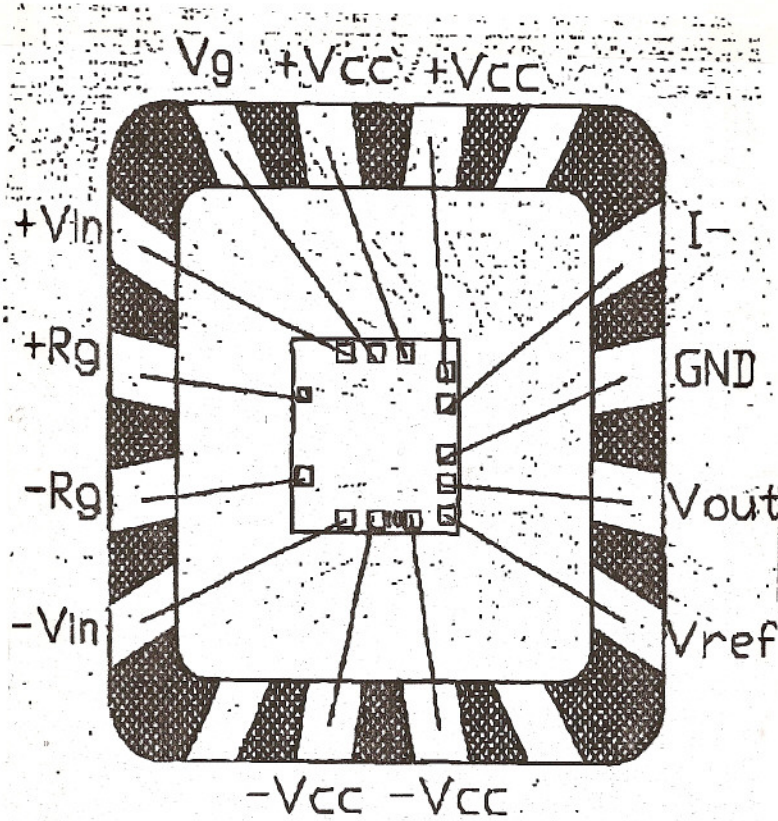




Sierra Components, Inc.

2222 Park Place Building 3 Suite E • Minden, Nevada 89423
 Phone: 775.783.4940 Fax: 775.783.4947

Chip back potential is the level which bulk silicon is maintained by on-chip connection, or it is the level to which the chip back must be connected when specifically stated below.



Topside Metal: Aluminum
Backside: Silicon
Backside Potential: -VCC
Mask Ref: Issue 1
Bond Pads (Mils): .004 square

APPROVED BY:
MFG: National Semi.

DIE SIZE: .056" X .056"
THICKNESS: .012"

DATE: 1/27/00
P/N: CLC520

DG 10.1.2
 Rev A 3-4-99